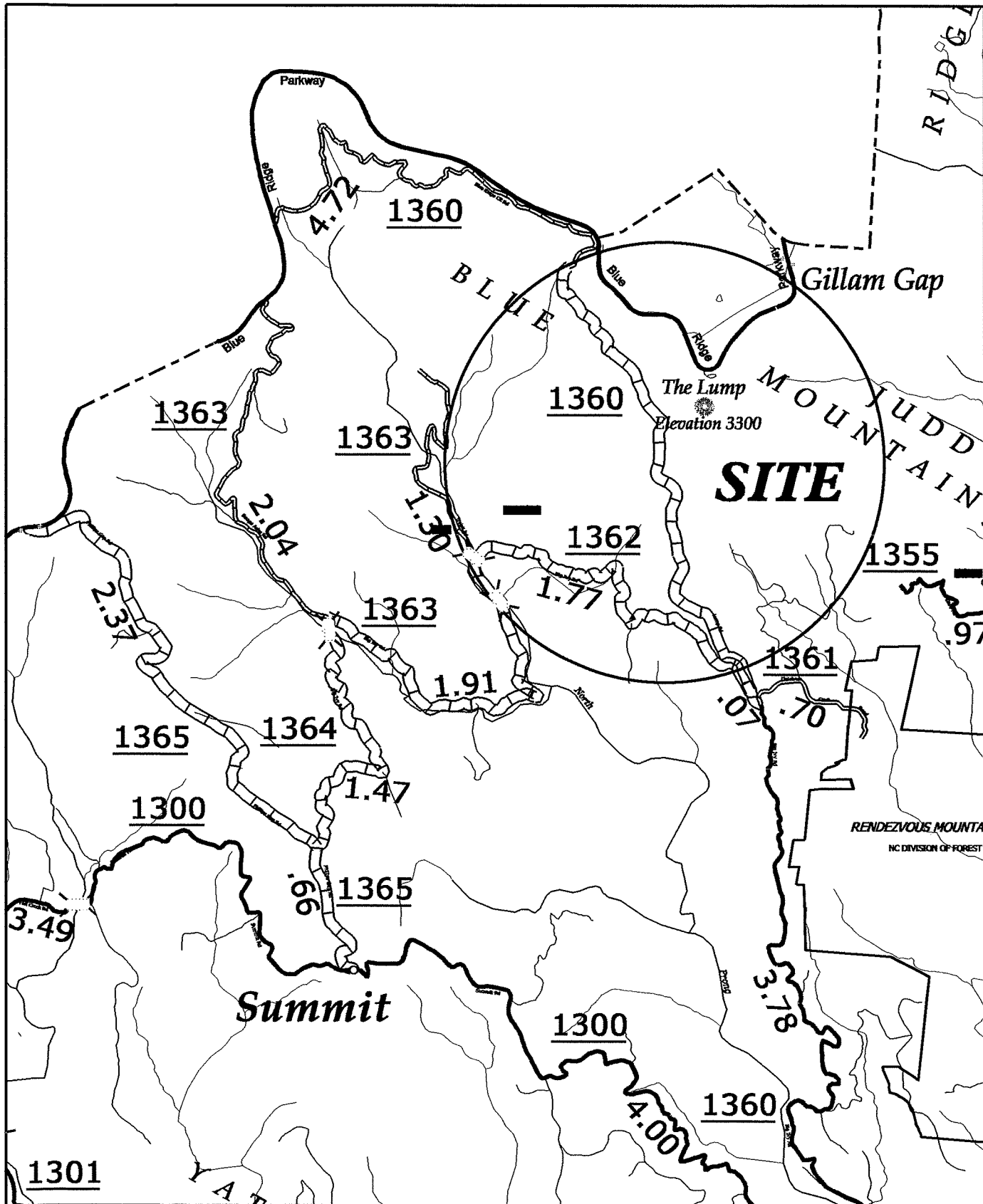
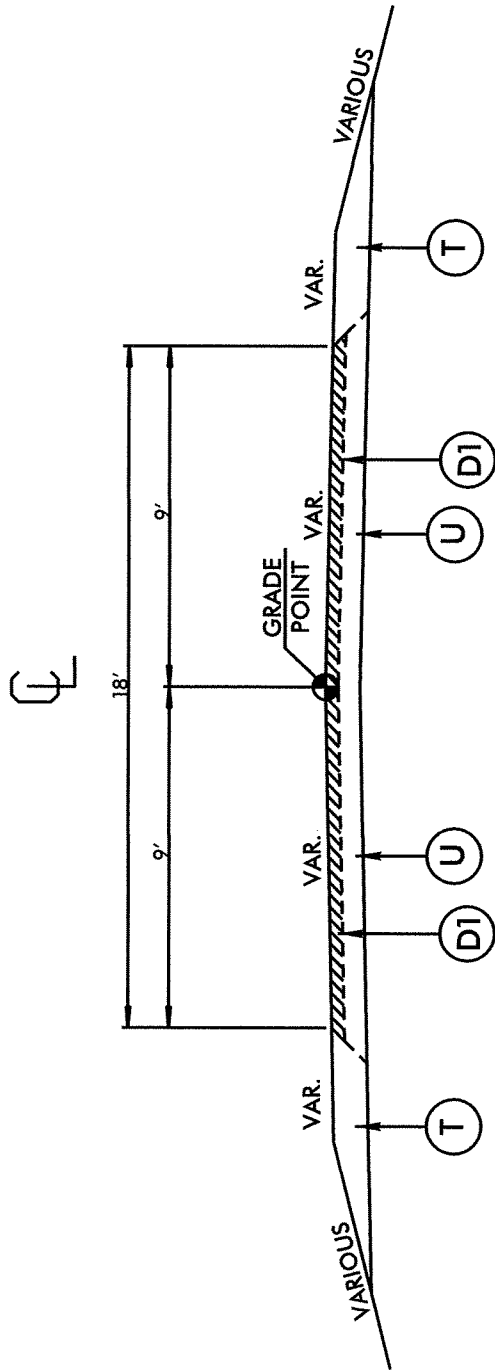


# SR 1360 LUMP RD. VICINITY MAP



# TYPICALS AND PAVEMENT SCHEDULES



## TYPICAL SECTION

SR 1360 LUMP RD.

D1	PROP. APPROX. 2" ASPHALT CONCRETE SURFACE COURSE, TYPE I19.0B, AT AN AVERAGE RATE OF 228 LBS. PER SQ. YD.
U	EXISTING 8" AGGREGATE BASE COURSE.
T	PROPOSED SHOULDER MATERIAL